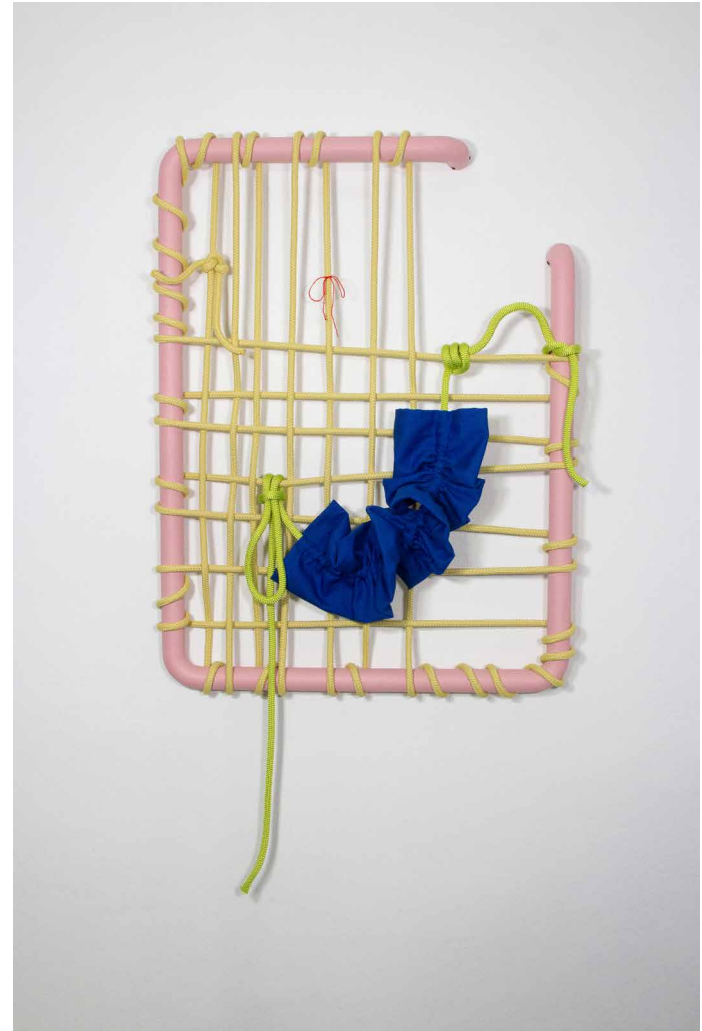




textile, rope, steel, varnish | 0,22 x 0,67 x 0,18m

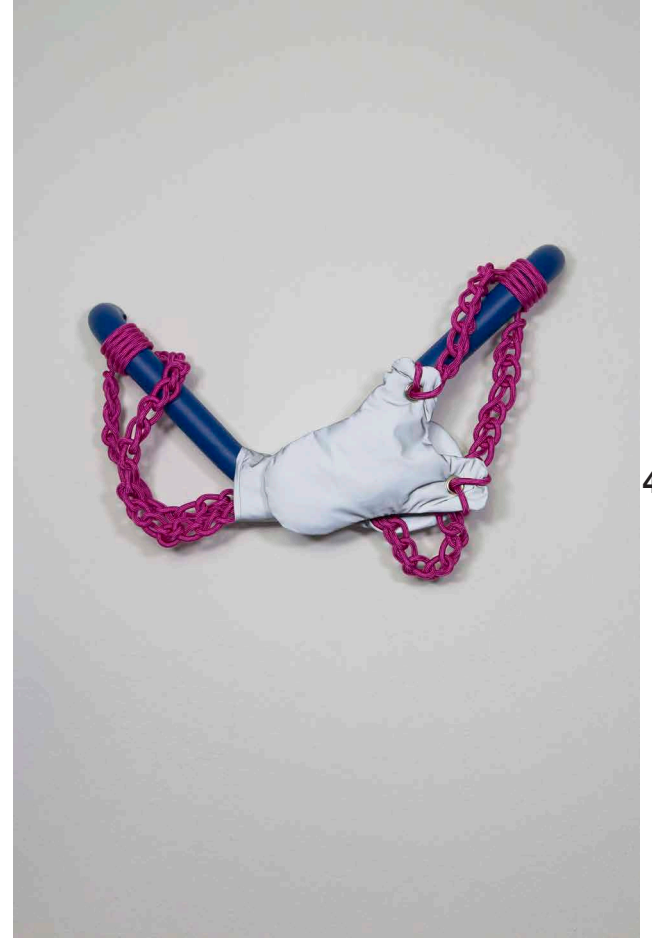


textile, rope, steel, varnish | 0,40 x 0,45 x 0,18 m



textile, rope, steel, varnish | 0,60 x 0,80 x 0,15 m

officially healed | 2024



4

david mergelmeyer | portfolio

synthetic fabric, rope, steel, varnish, cotton filling | 0,60 x 0,80 x 0,15m



exhibition view | academy gallery | düsseldorf



exhibition view | emerging artist | dortmund museum

textile, sythetic fabric, cotton filling, steel, wood, rope, varnish | 2,00 x 1,00 x 1,10m

scraper black, white, pink | 2023



exhibition view | emerging artist | dortmund museum

textile, synthetic fabric, cotton filling, rope, steel, varnish | 0,30 x 0,40 x 0,20m

scraper red, purple, green | 2023



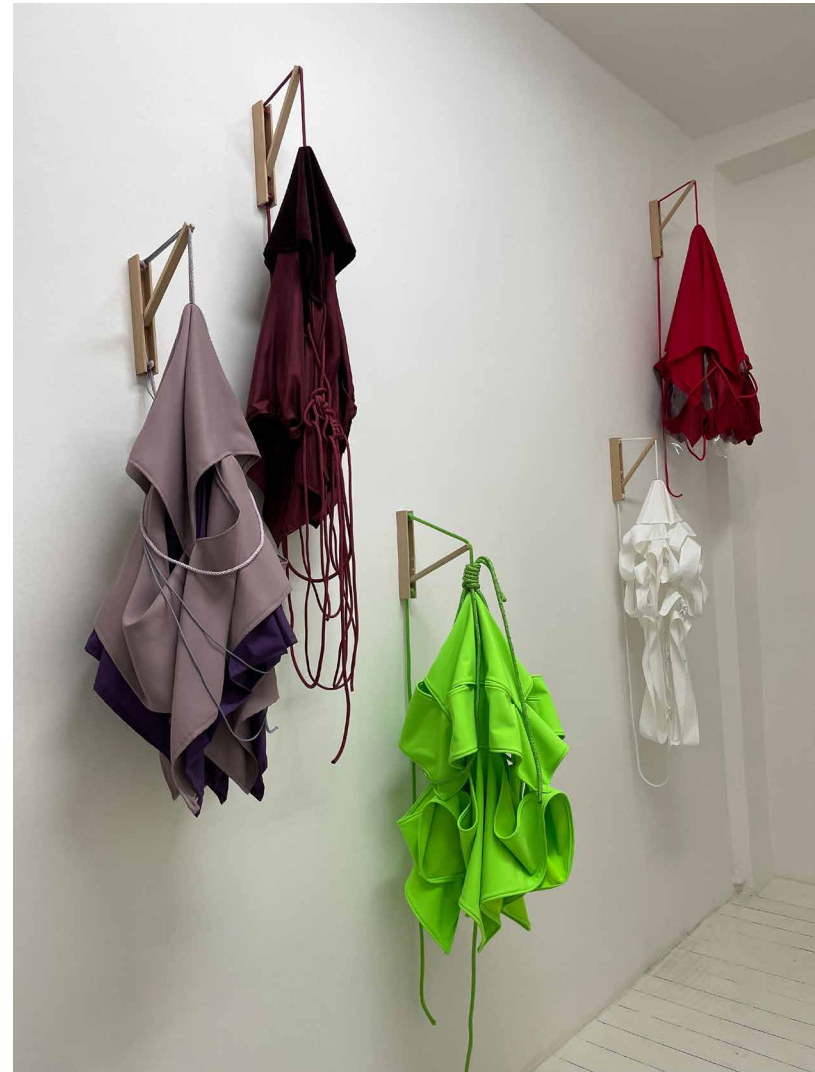
exhibition view | academy gallery | düsseldorf

printed synthetic fabric, cotton filling, rope, steel, varnish | 0,30 x 0,40 x 0,20m

formation purple, dark red, green, white, red | 2023



edition for emerging artist dortmund



textile, synthetic fabric, rope, steel, wood | 0,60 x 1,00 x 0,60m



exhibition view | fuhrwerkswaage | cologne



synthetic fabric, rope, steel, varnish | each 1,00 x 3,00 x 1,00m



exhibition view | fuhrwerkswaage | cologne

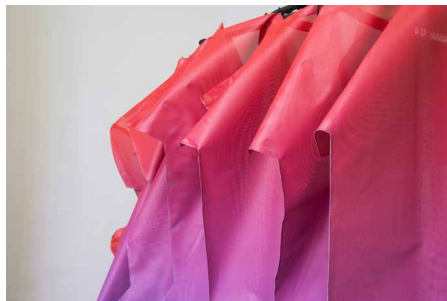


textile, synthetic fabric, foam, rope, cotton filling, steel, varnish | 1,20 × 2,20 × 0,45m

ego dancer | 2022



exhibition view | art academy | düsseldorf
final exam



synthetic fabric, cotton filling, rope, steel, varnish | 4,00 x 3,50 x 2,38m



exhibition view | art academy | düsseldorf
final exam



textile, synthetic fabric, rope, cotton filling, steel, varnish | 1,30 x 0,65 x 1,60m

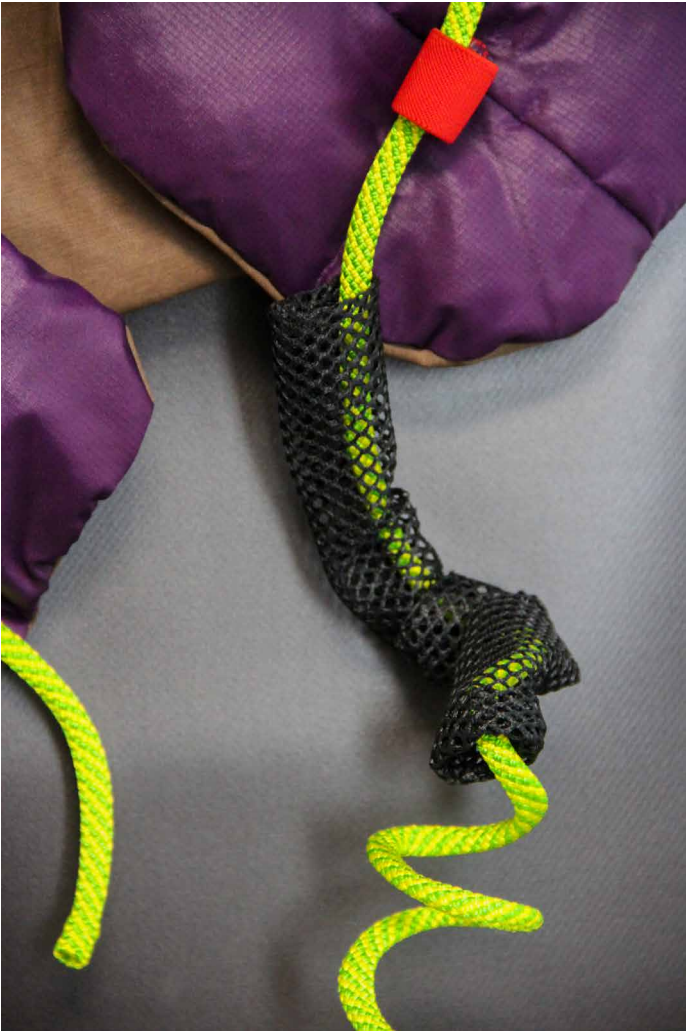


exhibition view | art academy | düsseldorf
final exam



weary | 2022





textile, synthetic fabric, rope, recycled down, steel, wood | 0,60 x 1,00 x 0,10m

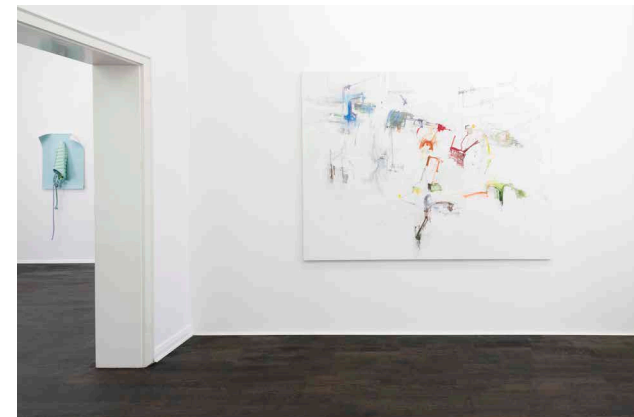
textile, synthetic fabric, rope, recycled down, steel, wood | 0,60 x 1,00 x 0,10m



FP-524-03 | 2021



FP-524-03 object |
a performative journey | jeune creation |
paris



exhibition view | gallery markus luetngen | düsseldorf

textile, synthetic fabric, cotton filling, rope, steel, wood, braid | 1,20 x 2,20 x 0,50m



bound wound | 2020